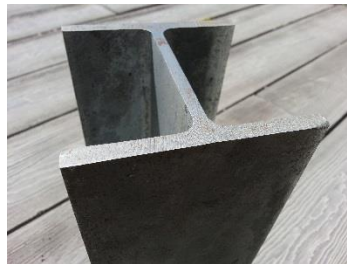


Galvanised Retaining Wall Posts



Universal Column (UC)



Size	Mass	Depth	Width	Flange	Web
mm	kg/m	mm	mm	mm	mm
100UC	14.8	97	99	7	5
150UC	23.4	152	152	6.8	6.1
	30	158	153	9.4	6.6
	37.2	162	154	11.5	8.1
200UC	46.2	203	203	11	7.3
	52.2	206	204	12.5	8
	59.5	210	205	14.2	9.3
250UC	72.9	254	254	14.2	8.6
	89.5	260	256	17.3	10.5
310UC	96.8	308	305	15.4	9.9
	118	315	307	18.7	11.9
	137	321	309	21.7	13.8
	158	327	311	25	15.7

Generally the lightest sections of each size are used for the Retaining wall posts.
The most common are 100UC 14.8 kg/m & 150UC 23.4 kg/m.

100UC 14.8 We stock standard lengths listed below and also long lengths for cutting down to your exact requirements.

900 mm, 1200 mm, 1500 mm, 1800 mm, 2100 mm, 2400 mm, 2700 mm, 3000 mm.

150UC 23.4 is stocked in long lengths and cut to suit customers requirements.

Parallel Flange Channel (PFC)



Designation Size mm	Section Mass kg/m	Section Depth mm A	Flange Width mm B	Flange Thickness mm C	Web Thickness mm D	Root Radius mm	m/tonne
75 x 40	5.92	75	40	6.1	3.8	8.0	169
100 x 50	8.33	100	50	6.7	4.2	8.0	121
125 x 65	11.9	125	65	7.5	4.7	8.0	85
150 x 75	17.7	150	75	9.5	6.0	10.0	57
180 x 75	20.9	180	75	11.0	6.0	12.0	48
200 x 75	22.9	200	75	12.0	6.0	12.0	44
230 x 75	25.1	230	75	12.0	6.5	12.0	40
250 x 90	35.5	250	90	15.0	8.0	12.0	29
300 x 90	40.1	300	90	16.0	8.0	14.0	25
380 x 100	55.2	380	100	17.5	10.0	14.0	19

PFC We stock standard lengths listed below and also long lengths for cutting down to your exact requirements.

900 mm, 1200 mm, 1500 mm, 1800 mm, 2100 mm, 2400 mm, 2700 mm, 3000 mm.

We also sell 100PFC and 150PFC in pre gal.